



# Biomass Silo Systems

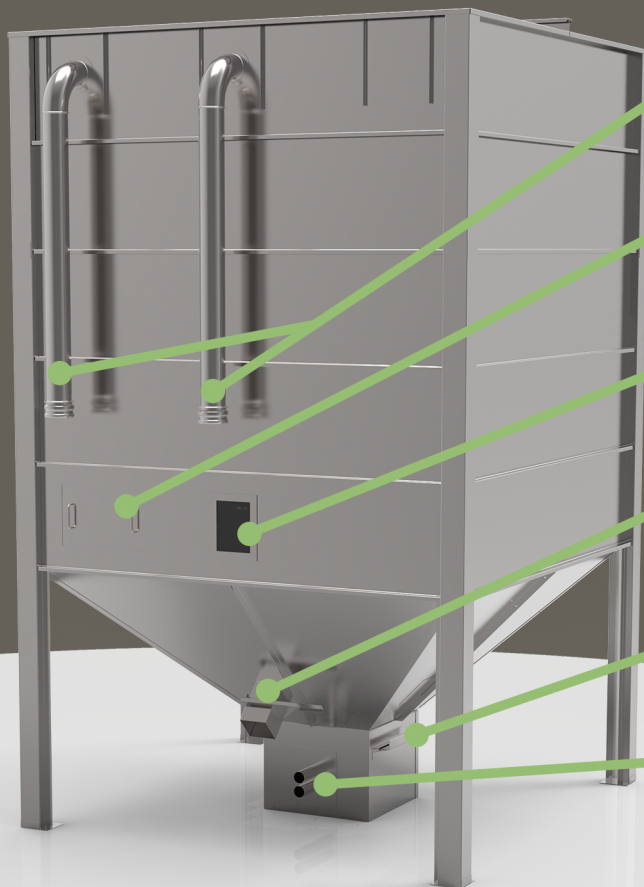
## W522 - 5 Ton Pellet Store

This 2m square footprint silo provides a robust, reliable and cost effective means of storing your wood pellet fuel and can come in both indoor and outdoor models. Manufactured from galvanised steel they are designed to be flat packed allowing them to be delivered direct to site for quick and easy assembly.

The feed outlet is suitable for either auger or vacuum extraction and a range of optional extra's allow users to customise the silo to their exact requirements.

Product Code	W522
Footprint	2m x 2m
Height	3.285m
Volume	10.16m <sup>3</sup>
Useful Capacity	5.5 Tons
Flat Packed Dimensions	(L)2500mm x (W)1250mm x (H)1000mm
Empty Weight	475kgs
Approx Assembly Time	5 hours for two people

## Standard Features



### Bulk Delivery Connections

Filling and ventilation pipework with delivery connections

### Bag Filling Panel

For bag filling and periodic cleaning and maintenance

### Inspection Window

For checking pellet levels

### Manual Extraction Chute

For withdrawing pellets can be positioned on any side

### Feed Shut Off Slide

To isolate feedbox during cleaning filling or maintenance

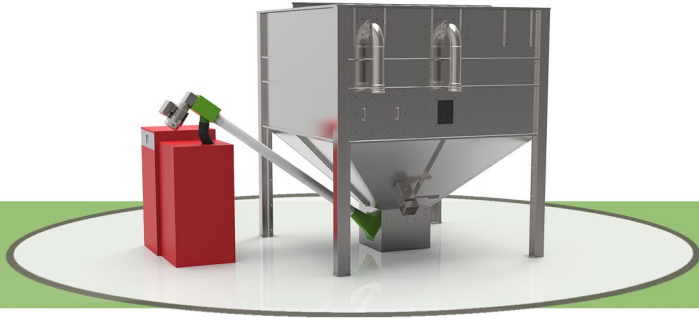
### Feed Outlet

Choice of standard auger or vacuum feed outlets

### Dust Removal Panel

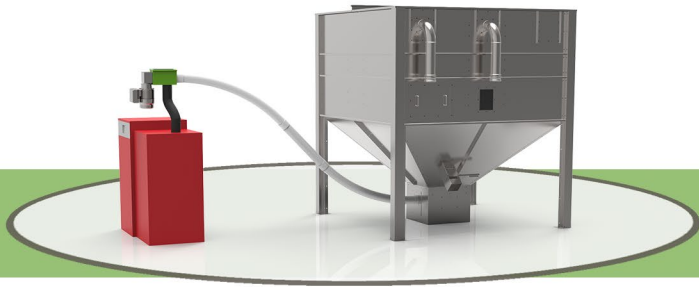
For removal of dust from silo

# Feed Options



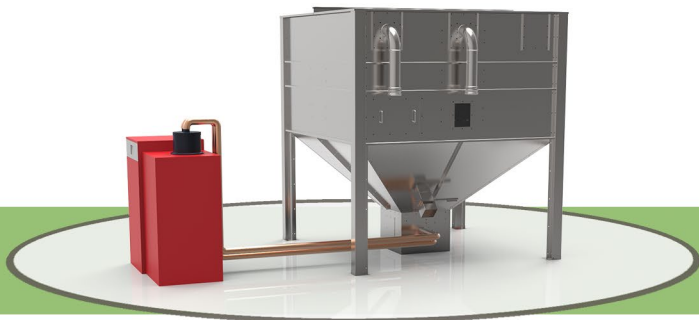
## Rigid Auger

For short auger runs we supply 3-4m long straight augers which collect from the outlet and transport them to the boilers day hopper



## Flexi Auger

When short straight run is not possible we can supply flexi augers ranging from 3-10m. These are supplied with 2 X 45 degree bends allowing flexibility in the auger run



## Vacuum System

A vacuum extraction probe allows for pneumatic extraction of the pellets over short distances. A dosing auger can also be supplied for longer vacuum distances

## Optional Extras

### Greencoat Finish



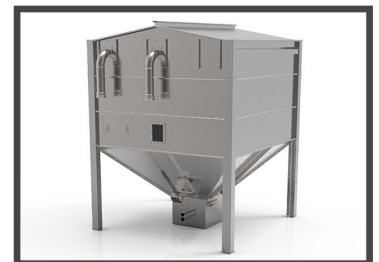
PVC coated finish gives the product a 30 year outdoor life

### Timber Cladding Kits



Treated timber cladding panels to help give the silo a more natural look

### Apex Roof



Optional roof design for use in areas that experience high snow loads